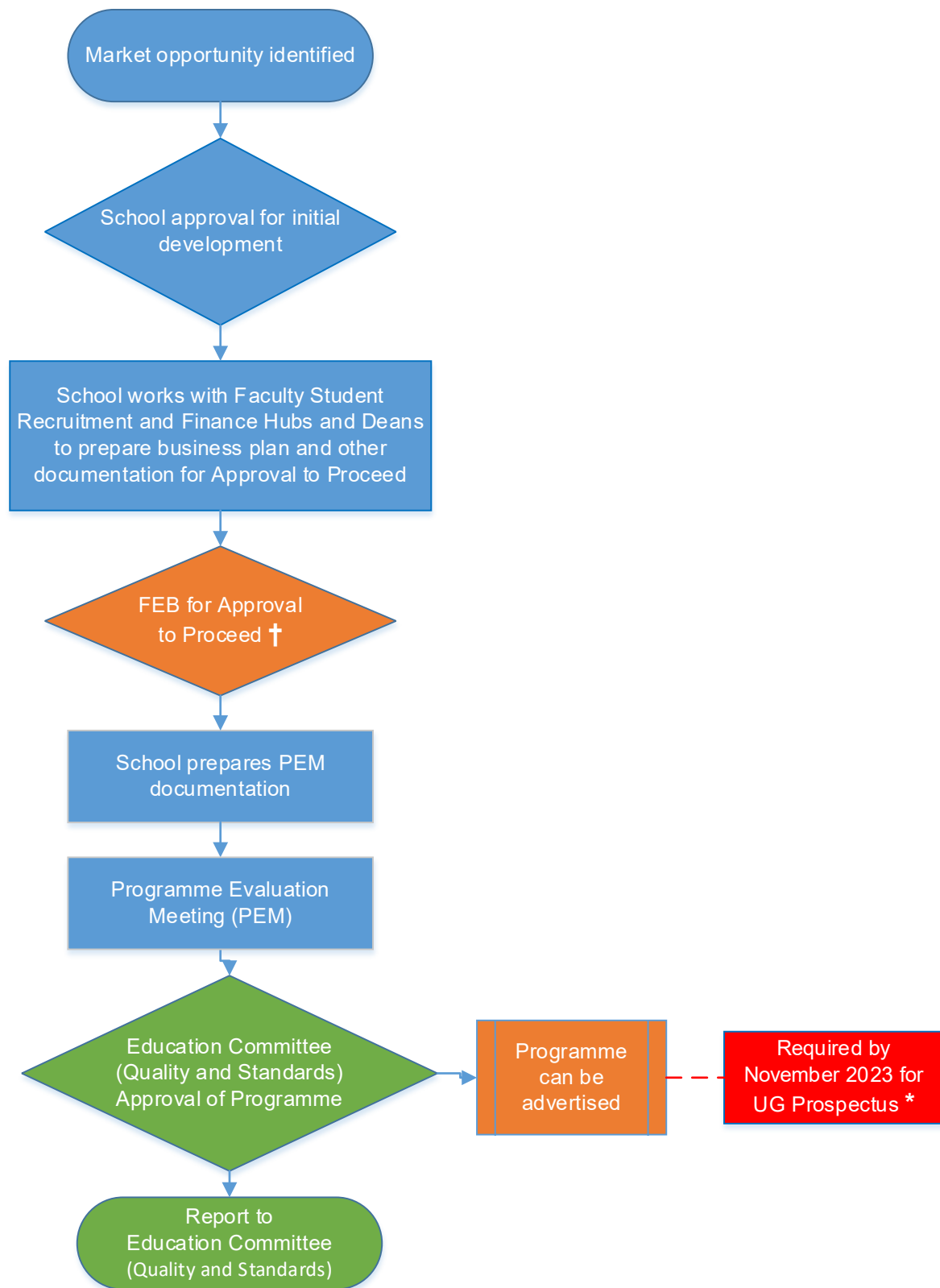


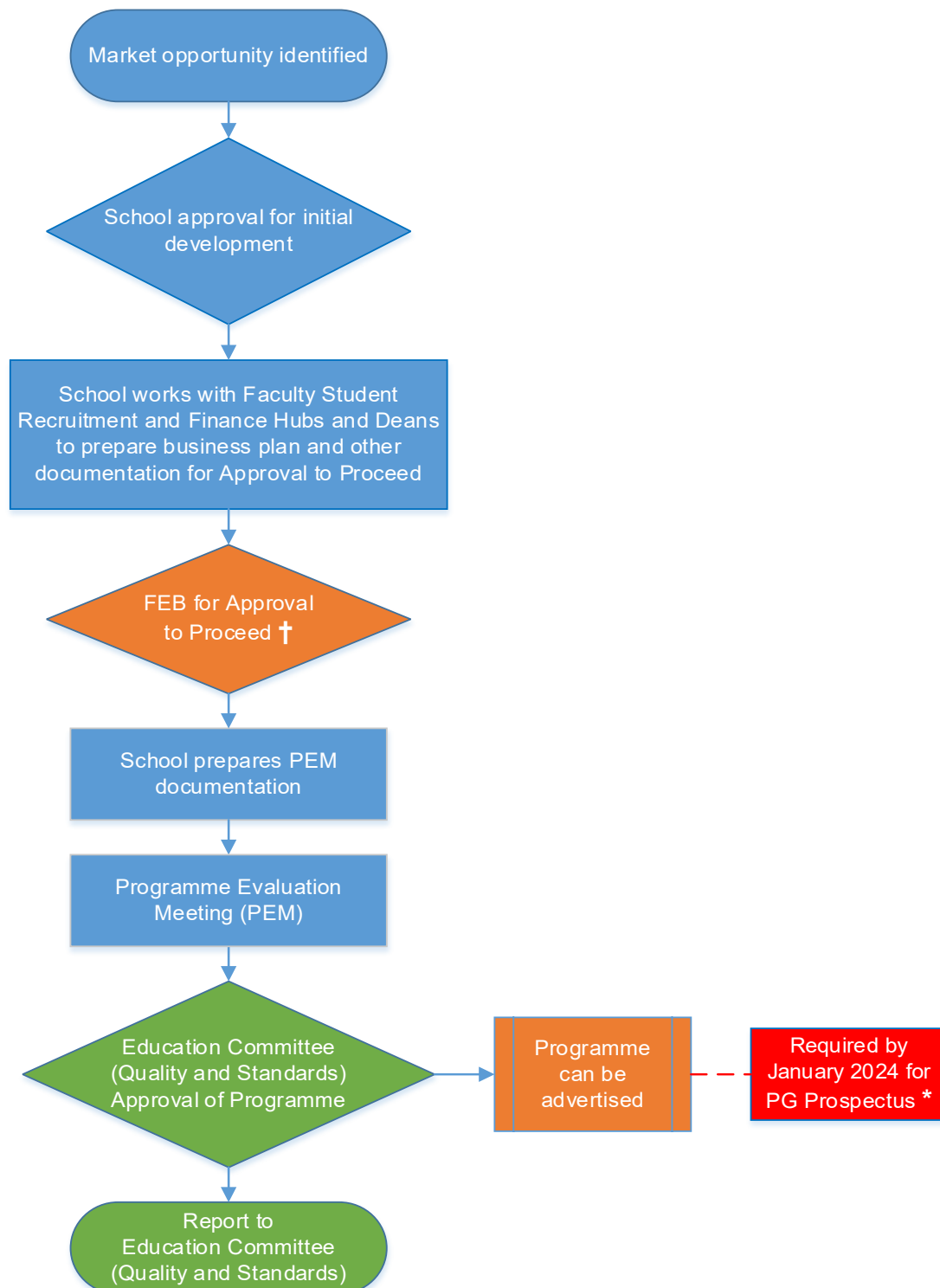
**Approval of New Undergraduate Programmes (non-collaborative)
for 2025-26 Entry: note two year lead-in**



† Under CMA Guidance, programmes cannot be advertised prior to full approval.

* Where exceptions fall outside this timeline, programme development will be managed by FEB

**Approval of New Postgraduate Taught Programmes (non-collaborative)
for 2025-26 Entry: note two year lead-in**



† Under CMA Guidance, programmes cannot be advertised prior to full approval.

* Where exceptions fall outside this timeline, programme development will be managed by FEB