



**QUEEN'S
UNIVERSITY
BELFAST**



WELCOME TO QUEEN'S

Start your journey as a Queen's student
in the Faculty of Medicine, Health and
Life Sciences

WELCOME

On behalf of the Faculty of Medicine, Health and Life Sciences as the Interim Faculty Pro-Vice-Chancellor, it is my pleasure to welcome you to Queen's University Belfast. We are delighted that you have chosen to pursue your academic and personal goals with us, and we look forward to supporting you on your student journey.

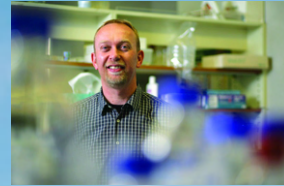
Faculty colleagues have created this Welcome Guide to support you with useful contact details and information as you settle into your academic career at Queen's University.

Throughout your time here, you will have the opportunity to engage with many of our 1,350 world-class Faculty staff members who are

dedicated to guiding you through your degree programmes while encouraging you to follow your passion, think critically and explore new horizons. Our aspiration is that you acquire the skills and experience needed to help you make a positive difference in the world!

Additionally, you will have access to our state-of-the-art facilities and cutting-edge resources, which are designed to enhance your student experience. Furthermore, the opportunity to connect and study alongside fellow students from diverse cultural or ethnic backgrounds will enrich your academic journey in meaningful ways.

Once again, welcome to Queen's. We look forward to your presence on our campus and the contributions you will bring to our vibrant community.



Professor Aaron Maule
Interim Faculty Pro-Vice-Chancellor,
Faculty of Medicine, Health and Life
Sciences



WHERE TO FIND US

The Faculty of Medicine, Health and Life Sciences is located at 90 Lisburn Road. Entrance to the building is off Elmwood Avenue; just look out for the sliding doors alongside Starbucks. Buzz Level 1 for reception.

Email: pvc-mhls@qub.ac.uk



**QUEEN'S
UNIVERSITY
BELFAST**

**FACULTY OF
MEDICINE,
HEALTH AND
LIFE SCIENCES**

YouTube Link to video: www.youtube.com/watch?v=-iyMTqRDVWA

OUR STRUCTURE

Schools

Schools within the Faculty of Medicine, Health and Life Sciences:

- The School of Biological Sciences
- The School of Medicine, Dentistry and Biomedical Sciences
- The School of Nursing and Midwifery
- The School of Pharmacy

Global Research Institutes

Our Global Research Institutes are flagships for interdisciplinary research in areas of major societal challenge. We bring together a critical mass of excellent researchers from a wide range of disciplines in world-class facilities to tackle some of the greatest global issues of our age.

There are two Global Research Institutes within our Faculty:

- The Institute for Global Food Security
- The Institute for Health Sciences

Find out more information here:

<http://go.qub.ac.uk/aboutmhls>

FACULTY SENIOR MANAGEMENT

KEY CONTACTS

Professor David Grieve
Dean of Internationalisation



Professor David Grieve leads the development and implementation of strategies to foster global engagement and cultural diversity in the Faculty. Within his role, Professor Grieve works with academic and professional support staff across the University, in collaboration with students, to enhance international education and research programmes, incorporating exchange programmes, and cross-cultural initiatives. As Dean of Internationalisation, he actively promotes awareness and reputation of the Faculty through connection with international partners, to create exciting opportunities for students to engage with our global network.

Professor Karen Morrison
Dean of Education



Professor Karen Morrison provides visionary leadership, shaping curriculum development, and fostering a conducive, inspiring learning environment. As Dean of Education, she collaborates with faculty staff and students to ensure high academic standards, innovative teaching methodologies, and relevant research embedded programmes. With a keen focus on educational excellence, and background in clinical and molecular genetic research in neurodegeneration as a Clinical Academic Neurologist, Professor Morrison plays a crucial role in leading education across FMHLS, inspiring our students to become innovative and effective health and life science professionals in long, fulfilling careers.

Professor Marian Traynor
Associate Dean of Education



As Associate Dean of Education, Professor Marian Traynor collaborates closely with faculty members, students, and administrative staff to enhance the quality of educational programs and initiatives. Within her role, Professor Traynor contributes to curriculum development, program assessment, and the implementation of innovative teaching strategies. With her dedication to educational excellence Professor Traynor significantly contributes to the institution's mission of providing a high-quality learning experience.

Mrs Colleen Spence
Director of Operations



On a day-to-day basis Colleen works in partnership with the Faculty Pro-Vice-Chancellor, leading at a strategic level through effective development and management of key professional service functions. Colleen plays a pivotal role alongside the Faculty PVC, Deans, Heads of School and School Managers to ensure that the key ambitions outlined in the University Strategy are delivered through effective Faculty planning and prioritisation.

Get in touch with senior management, email:
pvc-mhls@qub.ac.uk

FACULTY EDUCATION SUPPORT HUB

Mrs Oonagh Bell

Faculty Education Manager
Email: o.bell@qub.ac.uk



Oonagh manages the Education Support Hub for Faculty, ensuring the provision of an optimal student support and student experience for Undergraduate and Postgraduate students. She also delivers projects that support the Faculty's Strategy 2030 ambitions – providing an innovative, transformative, and supportive educational experience for all our students. Oonagh leads on key aspects of governance relating to academic and student affairs, and supports the Director of Operations, Deans of Education and Internationalisation and wider Faculty Leadership team.

Mrs Patricia Minnis

Student Experience Officer
Email: p.minnis@qub.ac.uk



Patricia is the Faculty Student Experience Officer at MHLS and works closely with faculty members to enhance students' academic journey, engagement, and support. As part of her role, she looks at avenues for enhancing the overall student experience and facilitates staff-student initiatives to address key student well-being concerns. Throughout your time at Queen's, Patricia will keep you informed about upcoming student events and support initiatives through regular communications. If you have any questions or specific concerns related to your student experience, please feel free to reach out to Patricia – she will be happy to help.

Mr Justin O'Hagan

PGR English Language Tutor
Email: j.ohagan@qub.ac.uk



As the Language Support Officer at MHLS, Justin provides support and instruction in speaking, reading, and writing to international postgraduate research (PGR) students in the faculty. You can meet him in one-to-one sessions, face-to-face or on Teams, where you can discuss your writing or prepare for a presentation or your Annual Progress Review. Justin also provides small group workshops and speaking classes, where you can share your knowledge and experience with other students across the faculty. In addition, Justin has developed a bank of self-study materials (Canvas course MHLS0010) specifically tailored to the needs of international PGR students in MHLS. Justin is looking forward to hearing from you.

Ms Victoria Thampi

Faculty Learning Development
Support Officer
Email: v.thampi@qub.ac.uk



As the Postgraduate Learning Development Support Officer in MHLS, Victoria seeks to provide study skills support and development opportunities through sessions and individual consultations to ensure that you are successful in your postgraduate study. Victoria is looking forward to meeting you and wishes you every success as you study.

CAMPUS MAP



- KEY**
- ROAD/PATHS
 - BUILDINGS
 - FACULTY OFFICES
 - SCHOOL OFFICES
 - GLOBAL RESEARCH INSTITUTES
 - LOCATION

FACULTY OFFICE

1. MHLs Faculty Office, 90 Lisburn Road

SCHOOL OFFICES

2. School of Pharmacy
3. School of Medicine, Dentistry and Biomedical Sciences
4. School of Nursing and Midwifery
5. School of Biological Sciences

GLOBAL RESEARCH INSTITUTES

6. The Institute of Global Food Security
7. The Institute of Health Sciences

LOCATIONS

8. Belfast City Hospital
9. Clinical Research Facility
9. Biological Sciences
10. Medical Biology Centre (MBC)
10. Biomedical Sciences Library (MBC)
11. Health Sciences Building
12. Lanyon Building
13. McClay Research Centre
13. Pharmacy Building
14. One Elmwood
15. The Patrick G Johnston Centre for Cancer Research
16. Whitla Medical Building
17. Wellcome-Wolfson Institute for Experimental Medicine

ROYAL VICTORIA HOSPITAL **LOCATIONS**

The Royal Victoria Hospital site hosts several key facilities, including the School of Dentistry, the Institute for Public Health, the Institute for Clinical Sciences, as well as the QUB Medical Library and The Healthcare Library of Northern Ireland. This site is conveniently located approximately a 20-minute walk from the Lanyon building. Alternatively, students can utilize a free shuttle bus service, and additional information can be found on the following page.

Click on the links below for RVH Google Map Locations

Royal Victoria Hospital:

<https://goo.gl/maps/42TSevC6nPAYoiFv9>

Mulhouse:

<https://goo.gl/maps/d2Mv9njhWLta8sBY9>

QUB Medical Library and The Healthcare Library of Northern:

<https://goo.gl/maps/9L1zDWWyjXkL8zur6>

School of Dentistry:

<https://goo.gl/maps/b9f6CekaM5F9tytT6>

Institute for Public Health / Institute for Clinical Sciences:

<https://goo.gl/maps/bQ4sNY7KEU3h6Z9j6>





FREE SHUTTLE BUS

Did you know there is a free shuttle bus between Belfast City Hospital and Royal Victoria Hospital?

The shuttle bus runs regularly between the Royal Hospital and Belfast City Hospital sites from 7.40am to 5.15pm Monday to Friday.

It's free, just show your QUB smart card to the driver.

More information on bus timetables can be found here:

<http://go.qub.ac.uk/FreeShuttleBus>



MEET YOUR SCHOOL



SCHOOL OF BIOLOGICAL SCIENCES

The school has a dedicated team, and you can contact them here:

Key Contacts

Head of School: Professor Geoff McMullan, hos.biolsci@qub.ac.uk

Deputy Head of School: Professor Ciaran Graham

ISFS Director: Professor Nigel Scollan

PGT Director of Education: Professor Alberto Longo

UG Director of Education: Dr Susan Doherty

PGR Director: Dr Gareth Arnott

School Manager: Ms Siobhan Fitzsimons

Careers and Placement Adviser: Ms Dionne Alexander

Education Administrator: Ms Michelle Harris

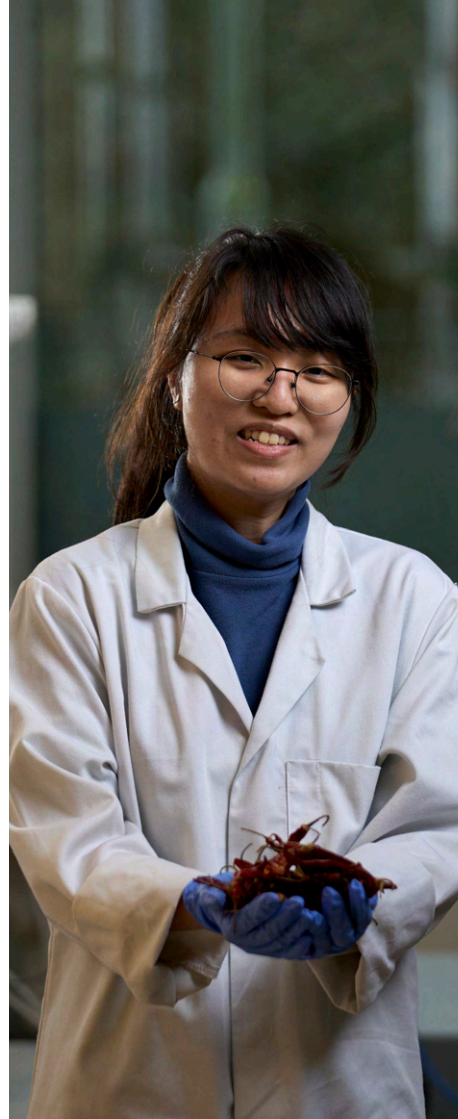
Research Administrator: Dr Sorina Radulescu

Contact email addresses:

UG Queries: biosciences-ug@qub.ac.uk

PGT Queries: biosciences-pgt@qub.ac.uk

PGR Queries: biosciences-pg@qub.ac.uk



Get In Touch

School Office:

School of Biological Sciences
19 Chlorine Gardens
Belfast



Telephone:

+44 (0)28 9097 5785

Email:

SBSIGFsoffice@qub.ac.uk

Website:

<http://go.qub.ac.uk/BiologicalSciences>

What's Happening in the School



@ School of Biological Sciences QUB



@QUBbioscience

Get In Touch

School Office:

Whitla Medical Building
2nd Floor
97 Lisburn Road
Belfast



Telephone:

+44 (0)289097 2619

Email:

pgoffice.smdb@qub.ac.uk

Website:

www.qub.ac.uk/schools/mdbs



POSTGRADUATE AND PROFESSIONAL DEVELOPMENT SCHOOL OF MEDICINE, DENTISTRY AND BIOMEDICAL SCIENCES

The school has a dedicated team for Postgraduate Students and you can contact them here:

Key Contacts

Director of Postgraduate Taught: Professor Fionnuala Lundy

Director of Postgraduate Research: Professor Amy Jayne McKnight

Postgraduate and Professional Development Administrator: Ms Valerie Reid

Contact email address: pgoffice.smdb@qub.ac.uk



Welcome to Queen's

CENTRE FOR BIOMEDICAL SCIENCES EDUCATION

The centre has a dedicated team, and you can contact them here:

Key Contacts

Centre Director: Dr Etain Tansey, e.tansey@qub.ac.uk

Centre Manager: Mrs Giulia Kelly, giulia.kelly@qub.ac.uk

Associate Director: Curriculum Management: Dr Aisling Keane, a.keane@qub.ac.uk

Associate Director: Student Experience Dr Joseph Quinn, joe.quinn@qub.ac.uk

Adviser of Studies Year 1: Dr Declan McLaughlin, declan.mclaughlin@qub.ac.uk

Adviser of Studies Year 2: Dr Eiman Abdel Meguid: e.abdel-meguid@qub.ac.uk

Adviser of Studies Year 3: Dr Clare Foy, c.foy@qub.ac.uk



Get In Touch

School Office:

1st Floor, Whitla Medical Building
97 Lisburn Road
Belfast



Telephone:

+44 (0)28 9097 2677

Email:

biomedsci@qub.ac.uk

Website:

<http://go.qub.ac.uk/BiomedicalSciencesCentre>

What's Happening in the School



@ Centre for Biomedical
Sciences Education



CENTRE FOR DENTISTRY

The centre has a dedicated team, for undergraduate students and you can contact them here:

Key Contacts

Centre Manager: Mrs Carolanne Smith, c.smith@qub.ac.uk

Acting PA to Director for the Centre for Dentistry: Mrs Julie Mahaffy, j.mahaffy@qub.ac.uk

Quality Assurance Co-ordinator: Ms Kirenjit Bagri, k.bagri@qub.ac.uk

Examinations Officer: Ms Christina McQuillan, christina.mcquillan@qub.ac.uk

1st & 2nd Year Assessment: Mr Neil Willey, denexams@qub.ac.uk

3rd, 4th & 5th Year Assessment: Ms Chloe Fullerton, denexams@qub.ac.uk

1st & 2nd Year Curriculum/Timetabling: Mr Neil Willey, dentistry@qub.ac.uk

3rd, 4th & 5th Year Curriculum/Timetabling: Ms Chloe Fullerton, dentistry@qub.ac.uk

Absence Monitoring: dentistry@qub.ac.uk



Get In Touch

School Office:

Royal Hospitals site, 6BA, 274
Grosvenor Rd, Belfast

Telephone:

+44 (0) 2890 97 6268 / +44
(0) 2890 97 6267

Website:

www.qub.ac.uk/schools/mdbs

Email:

dentistry@qub.ac.uk



Get In Touch

School Office:

Ground Floor,
Whitla Medical Building
97 Lisburn Road
Belfast



Telephone:

+44 (0) 2890 97 2450

Email:

medicaled@qub.ac.uk

Website:

www.qub.ac.uk/schools/mdbs

What's Happening in the School



@QUBMedEd



CENTRE FOR MEDICAL EDUCATION

The centre has a dedicated team for undergraduate students, and you can contact them here:

Key Contacts

Centre Director: Professor Neil Kennedy, n.kennedy@qub.ac.uk

Associate Director for Quality Assurance and Curriculum: Mairead Boohan, m.boohan@qub.ac.uk

Curriculum Academic Lead Year 1: Dr Derek Brazil, d.brazil@qub.ac.uk

Curriculum Deputy Academic Lead Year 1: Dr Joe Houghton, joseph.houghton@qub.ac.uk

Curriculum Administrator Year 1 & Student Selected Components: Ms Rosie McGaughey, r.mcgaughey@qub.ac.uk

Case Based Learning Academic Lead Year 1: Dr Paul Hamilton, paul.hamilton@qub.ac.uk

Case Based Learning Administrator: Ms Sarah Hagan, s.hagan@qub.ac.uk

Assessment Academic Lead: Dr Michael Williams, m.williams@qub.ac.uk

Assessment Manager: Ms Sarah Crawford, sarah.crawford@qub.ac.uk

Examinations Officer: Mrs Pepetua Lewis, p.lewis@qub.ac.uk

Adviser of Studies: Dr David Bell, d.bell@qub.ac.uk

Pastoral Support Lead: Dr Mairead Corrigan, m.corrigan@qub.ac.uk

Student Support & Guidance Officer: Mrs Joanna Scott, joanna.scott@qub.ac.uk

Reflective Practice Portfolio Academic Lead: Dr Mairead Corrigan, m.corrigan@qub.ac.uk

Reflective Practice Portfolio Administrator: Ms Rosie McGaughey, r.mcgaughey@qub.ac.uk

Disability Area: Mr Robin Baker, r.baker@qub.ac.uk



SCHOOL OF NURSING AND MIDWIFERY

Key Contacts

The school has a dedicated team, and you can contact them by emailing: nursing@qub.ac.uk

Head of School: Professor Donna Fitzsimons

UG Director of Education: Mrs Johanna McMullan

PGT Director of Education: Professor Micheal Brown

PGR Director of Research: Professor Helen Noble

Administrators: Ms Catherine Donaghy and Ms Anne Kearney

What's Happening in the School



@QUB School of Nursing and Midwifery



@QUBSONM



Get In Touch

School Office:

Medical Biology Centre,
97 Lisburn Road
Belfast

Email:

nursing@qub.ac.uk

Telephone:

+44 (0) 2890 97 8899

Website:

<http://go.qub.ac.uk/NursingMidwifery>

Get In Touch

School Office:
Medical Biology Centre,
97 Lisburn Road,
Belfast



Telephone:
+44 (0)28 9097 2086

Email:
pharmacyinfo@qub.ac.uk

Website:
<http://go.qub.ac.uk/SchoolofPharmacy>

What's Happening in the School

 @School of Pharmacy at
Queen's University Belfast

 @pharmacyatQUB



SCHOOL OF PHARMACY

Key Contacts

The school has a dedicated team, and you can contact them by emailing:
pharmacyinfo@qub.ac.uk

Head of School: Professor Colin McCoy

Deputy Head of School: Professor Gavin Andrews

Director of Education, Pharmacy: Professor Lezley-Anne Hanna

Director of Education, Pharmaceutical Sciences: Professor Maurice Hall

PGR Director: Professor Brendan Gilmore

Administrator: Ms Lee-Anne Howell



**SUPPORTING
YOU EVERY
STEP OF THE
WAY**





THERE IS **ALWAYS HELP AT HAND**

Things may not always go to plan during your time at university; something may happen that has an impact on your personally and, therefore, on your academic progress. If any factors have a significant effect on you and your studies, you should always let someone in your school know at the earliest opportunity.

ADVISOR OF STUDY

Have a query relating to your program e.g. module enrolment, change in programme, exceptional circumstances etc.? Contact your Advisor of studies.

Your Advisor of Studies can be found on your QSIS account.

PERSONAL TUTOR

Need some help transitioning to university, settling in your course or need help but are just not sure who to ask? Contact your Personal Tutor.

Students will be provided with details of their Personal Tutor at the start of the year.

REMEMBER "FIT TO SIT"

If you sit an exam or submit a piece of coursework, you are deeming yourself fit to be assessed. Once you have submitted your assessment, your results can't be changed.

EXCEPTIONAL CIRCUMSTANCES

Unforeseen events impacting your ability to sit an exam or submit an assessment? Let your school know as soon as possible using the online Exceptional Circumstances process.

Further information on assessment support options at Queen's including exceptional circumstances:
<https://qbstudentcloud.sharepoint.com/sites/assessment-support-hub>



THE THOMAS J MORAN GRADUATE SCHOOL

The Graduate School provides an exclusive postgraduate hub that values the needs of our students.

Based in the beautifully restored and remodeled Victorian Lynn library, this fully accessible space has modern, hi-tech meeting and group study rooms, a silent study area and social spaces creating a vibrant hub for intellectual exchange and collaboration.



At the Graduate School, you can avail of high-quality, transdisciplinary training and development to help you stand out in a fast-paced, global job market. They offer a range of innovative programmes, networking events and workshops designed to help you develop the skills to become 'Future Ready'.

Graduate School Training and Events are bookable via MyFuture. Workshops are bookable 4 weeks in advance, and booking will close 48 hours before the event takes place, unless otherwise stated. Once logged into MyFuture, go to Workshops (Careers, Graduate School & LDS) and type 'Graduate' into the keyword section to get a list of our events. More information for the can be found here: www.qub.ac.uk/graduate-school/events/

Visit The Graduate School website for the entire 2023-24 programme: <http://go.qub.ac.uk/graduate-school-events>

Get In Touch

Telephone:
+44 (0)28 9097 2585

Email:
graduateschool@qub.ac.uk

Opening Hours: 7.00am - 11.00pm, Monday - Sunday, excluding official university holidays.
Card access is only available outside of office hours and on weekends.



@qubgradschool



@ The Graduate School



@qubgradschool



The Graduate School
at Queen's

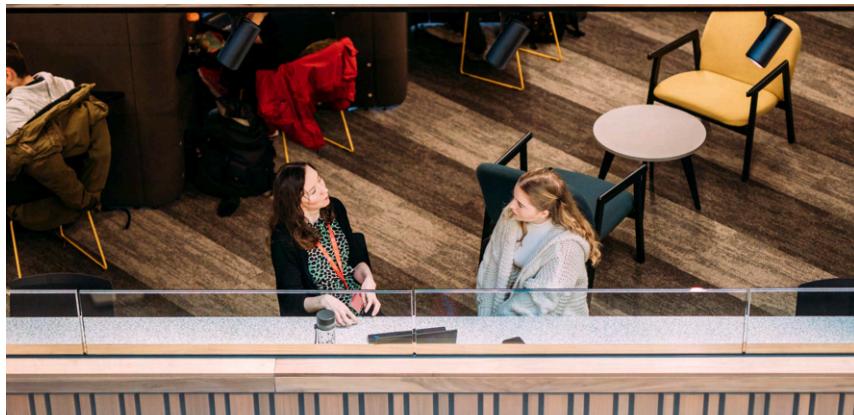
DISABILITY AND WELLBEING

DISABILITY SERVICES

We understand that students may be experiencing disability in various forms such as mobility, physical or mental health related illnesses. It is essential that everyone feels comfortable and safe as part of the community at Queen's University. If you require any information about disability services available at Queen's and in Belfast, feel free to contact the University.

The University has a dedicated team, and you can contact them here:

www.qub.ac.uk/directorates/sgc/disability/



STUDENT WELLBEING

You can contact our Student Wellbeing team at any time throughout the academic year. All our support services are free of charge and open to all Queen's students at all levels.

www.qub.ac.uk/directorates/sgc/wellbeing/



STUDENT **INFORMATION POINT**

We have a dedicated team on the Student Information Point who can help you with any queries you may have. You can contact them via:

studentconnect@qub.ac.uk

Having your Student Services based in One Elmwood means you can access everything from one convenient place. Get advice on careers with our dedicated

employability team; access a comprehensive range of free, flexible, and responsive support services from our Student Wellbeing Team, support from the Learning Development Service and the Widening Participation Unit; get financial support, access to disability services and visa and immigration help from the Immigration Support Service.

INFORMATION **SERVICES**

IT Services is responsible for the University's main computing facilities; this means they will play a big part in your University experience. Visit their website for everything you need to know to get started with IT in Queen's, including what to do next once you have registered, how to obtain your IT username and password, connecting to the Wi-Fi, and getting support for IT:

<http://go.qub.ac.uk/studentcomputing>

Once you have received your student ID card, you will also have access to the Library.



IT FACILITIES

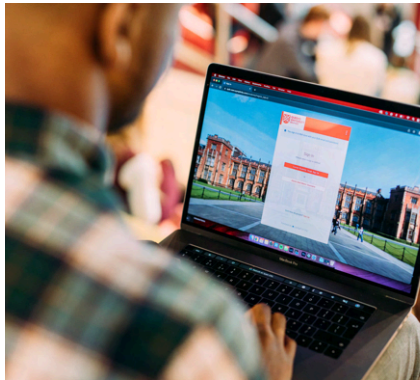


QUEEN'S ONLINE

Queen's Online is a secure portal. Accessible only to staff and students. Queen's online will give you access to your email, Canvas, Office 365, Teams and OneDrive. You will also be able to add money to your smart card, access your library account, where you will see details of any books you have borrowed, renew books and any fines you need to pay.

CANVAS

Canvas is the Virtual Learning Environment (VLE) at Queen's which is used to support teaching and learning across the University. Canvas allows you to submit assignments, see feedback and contribute to online discussions.



Q SIS

As a student at Queen's, you will be using Qsis for a number of functions. This includes enrolling and registering in the university, applying for financial aid, and viewing your personal information (e.g. Grades, Timetable).

IT HELPDESK

Need technical support? Have you got an IT related request or query? Then use our online system to submit an IT support Request and create a ticket on our IT helpdesk via your Queen's Online. You can also email: itservicedesk@qub.ac.uk or call (028) 9097 3760.

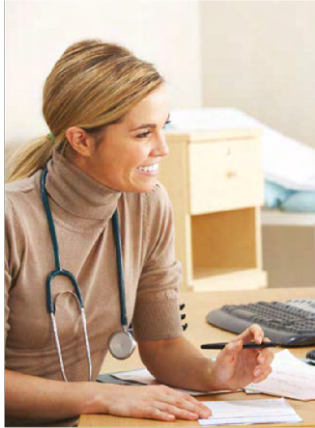
QUEEN'S APP

The Queen's App will give you access to:

- PC Availability in the McClay Library by floor.
- Campus Map which will help you get around the university. The map is pre-populated with Key building locations from around the campus.
- The Timetable shows your daily timetable according to the University Central Room Bookings database and QSIS.
- Library, which shows your loans, requests and fines.
- Smart Card, there is also a digital version of your barcode. It should look the same as the one on your student or staff card.

Download through the Google Play Store and the Apple App Store. Search for "Queen's University Belfast".

HOW TO REGISTER WITH A GP



It's very common for students to forget about health registration but it is an essential part of your time here at Queen's. It is important that you register with the University Health Centre at Queen's.

For registration, you will need your passport and proof of address. Health Care is free of charge, so if you have any health issues, you are more than welcome to call in, book an appointment and see a doctor.

Please note: If you are a student that normally resides outside the UK and Ireland you can register with the University GP practice if you are going to be living in Belfast for three months or more. If you are a student from outside the UK and Ireland and you will be living in Belfast for less than three months, you may wish to consider applying for private health insurance.

STEPS TO BOOK AN APPOINTMENT:

1. Open the official University Health Centre website.
2. Go to appointments and call on 028 9066 4634 (you can call in and book an appointment as well).
3. Explain your reason for calling and the staff will be able to help you the best they can.

www.universityhealthcentreatqueens.co.uk/

HOW TO GET AROUND BELFAST



The best thing about the city is that everything is close by, giving you the safety and peace of mind you need. It is easy and affordable to get around Belfast by bus, taxi, train and bicycle.

[tiktok.com/@qubelfast/
video/7138430450057497861](https://www.tiktok.com/@qubelfast/video/7138430450057497861)





BUS

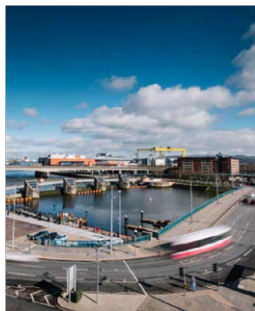
Translink metro bus services have a convenient network operating across the city at all times. If you are living in Queen's accommodation, you will mostly find yourself using '8A, 8B and 8C' as these travel back and forth to the city centre and main campus. You can buy single or day tickets as you step onto the bus. The bus drivers are friendly, so don't hesitate to ask if you are confused about where you are going.

TRAINS

Botanic Train Station is about 5 minutes' walk from the University, so if you're in the mood for exploring the scenic Northern Ireland coast or taking a day trip to Portrush (a coastal town with a beach), trains are an accessible and inexpensive way of getting around Belfast and Northern Ireland.

Pro tip: For Translink train and bus timetables, download their app:

www.translink.co.uk/usingtranslink/ourapps



TAXIS

Taxis are comparatively more expensive than buses, but save you time if you are in a hurry or if it's late at night, as they operate 24/7. Students mostly use 'FonaCab' and 'Value Cabs'.

Pro tip: You can book and track your ride on the app. So download the app, it also gives you a better idea of maps and your pickup locations.

VALUE CABS

Value Cabs 028 9080 9080

**fona
CAB**

Fona Cab 028 9033 3333

CYCLING

Cycling keeps you moving and healthy and doesn't cost a thing! Belfast is equipped with cycling lanes, making it safe and convenient for you to travel. You can buy second-hand bikes online or even a brand new one to keep you on the move. Belfast bikes are also a handy way to get moving around the city by renting a bike for a day from over 41 docking stations across the city.

For more information on Belfast Bikes

www.belfastbikes.co.uk/en/belfast/



BANK ACCOUNT

Carrying lots of cash everywhere is not recommended. Here are some banks where students open a bank account.

HSBC

www.hsbc.co.uk

Ulster Bank

www.ulsterbank.co.uk

Santander

www.santander.co.uk

You may also need a bank letter confirming your student status. Details on how to obtain a bank letter are available from the Student Information Point, One Elmwood Student Centre.

Pro tip: You will need your passport information, so don't forget to take your passport along when you are getting yourself registered.

<http://go.qub.ac.uk/bank-account>



SIM CARD

We understand that having access to the internet is a necessity, so here is how you can get your SIM card set up. There are two ways to get you connected:

Contracts: These are year-long contracts based on your preferences and you will need a bank account to set up a direct debit.

Pay as you go: This allows you to buy minutes and internet whenever you want. You have more flexibility in choosing your contract and changing it as you like.

Some supplier names to get you started:

EE www.ee.co.uk/mobile

O2 www.o2.co.uk

Giffgaff www.giffgaff.com

Three www.three.co.uk

**WHEN YOU
SETTLE**



BUDGET BUYS

As a student you definitely want to save money and make the most of your time here. There are several shops that sell cheaper products:



Household products, makeup essentials, grooming items.



Poundland sells many household, food and grooming items for £1.



B&M Bargains is great for cheap household products.



Compared to Tesco and Asda, Lidl is cheaper. Perfect if you want to save on your weekly grocery shop!



Gumtree is an online outlet where you can buy second hand items for a lot cheaper than buying brand new items. You do have to be careful about who you are buying from and don't forget to check the item thoroughly before you buy it.

GROCERY STORES

If you are missing homemade food or fancy a change in cuisine, Belfast caters for all tastes and budgets. Here is a list of grocery stores close to Queen's campus, where you can find a range of products and also places that will deliver food straight to your accommodation, should you need it. Or why not save yourself money with a fakeaway!

bbc.co.uk/food/collections/fakeaway_recipes

ubereats.com/gb/location/belfast

Asia Supermarket Korean, Chinese, South Asian
40 Ormeau Embankment,
Belfast BT6 8FZ

St George's Market
Organic, Irish
12-20 East Bridge Street,
Belfast BT1 3NQ
(On the weekends)

Makkah Market
Halal and Arabic

41 Bradbury Place,
Belfast BT7 1RR

Spice World
South Asian, local produce
35 Donegall Pass,
Belfast BT7 1DQ

Istanbul Market
Turkish and Halal

1 Botanic Avenue,
Belfast BT7 1JG

THE STUDENT'S UNION THE HEART OF CAMPUS

Welcome to the Students' Union! We are here to help you get the most out of your time at Queen's. We provide you with vital support, opportunities to socialise and different activities to help you make friends and develop your skillset alongside your studies.

The new state of the art Students' Union is a vibrant social hub with a revamped gig venue - Mandela Hall, the Union Bar, the Union Shop, Outdoor terraces, multiple hang out spaces and tech friendly study spaces right were you want them.

In the SU you also will find:

- **Student Officers** – the team is here to help you, represent you, organise campaigns to make the changes you want and lead the Union on your behalf
- **SU Advice** – provides students with free, independent, confidential, and non-judgemental advice

- **SU Enterprise** – Whatever your degree pathway, SU Enterprise help you develop creative thinking, generate ideas, and improve your entrepreneurial skills
- **SU Voice** – Stand up for what you believe in with SU Voice!
- **SU Volunteer** – Why not join the 5,000 students who are involved in volunteering at Queen's every year?
- **SU Lounge** – hang out, play pool and make yourself a cuppa on us.
- **SU Clubs & Societies**
- **SU Sexual Health Clinic**
- **Union Bar & Terrace**
- **Union Shop**
- **Mandela Hall**
- **SU Rooftop Garden**



QUEEN'S
STUDENTS'
UNION



SU CLUBS AND SOCIETIES

There are so many reasons to get involved in Clubs and Societies whilst at Queen's but many students find it's a great way to make friends and meet like-minded people. Many courses have related societies, but they do much more than discuss what happened in your latest lecture - they give you a little bit more from life at

Queen's: more fun; more time to be part of something; more time to find out about you. Academic societies can also help enhance your studies and your career opportunities in the process.

Not sure what to go for?
Check out our A-Z list:

www.q-su.org/ClubsSocieties/

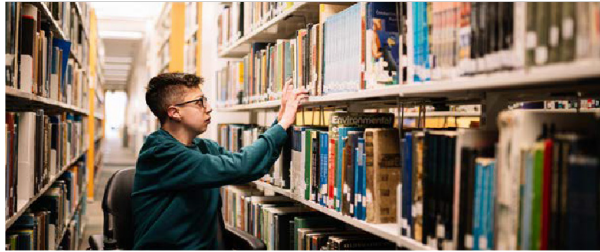
   @queensstudentsunion

 @QueensSU_  @yourQUBSU

STUDENT CARD PERKS

Once you've got your student card, you can use it around campus for things like:

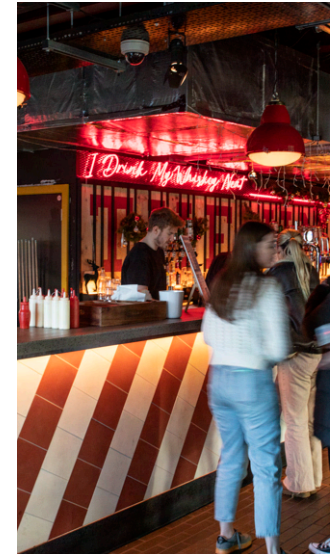
- Access to the library. You can use it for printing in the library
- Access to Queen's Physical Education Centre (PEC)
- You can use it to purchase from on-campus shops and cafés



PART-TIME WORKING

Queen's is dedicated to enhancing student employability by providing our students with real work experience on campus. We have a range of opportunities with flexible working hours, to suit and complement the student learning experience. QWork (www.q-work.co.uk).

There are also job-hunting websites for jobs outside of the university: www.nijobs.com and www.nijobfinder.co.uk



HOW TO TOP UP YOUR STUDENT CARD?

You can top up your student card online via Queen's Online or you can pop into the library, find one of the copy rooms and use the top up machines there.



THE SLANG GUIDE

You may find yourself hearing frequently used words, without knowing what they mean! So, here is a list to help you make sense of it all!

“WHAT’S THE CRAIC?”

What’s happening? What’s up?

“BANTER”

Playful chat

“DANDER”

Walk

“CHIPS”

Fries

“CRISPS”

Potato chips

“DEAD ON”

Okay

“WEE”

Little

“EEJIT”

Silly person

“HOOVER”

Vacuum cleaner

“GRAND”

Great

“WEE-BUNS”

Easy

“QUID”

1 pound

“FIVER”

5 pounds

“TENNER”

10 pounds

Watch for more:

<http://go.qub.ac.uk/K8jbc>





For further information:

Queen's University Belfast

Faculty of Medicine, Health and Life Sciences

90 Lisburn Road

Belfast

BT9 6AF

T: +44 (0) 28 9024 5133

(During business hours)



**QUEEN'S
UNIVERSITY
BELFAST**